



SERVING THE FOOD INDUSTRY SINCE 1951

## Stainless Steel Hydraulic Piston Sausage Stuffers with 48lb / 22kg Capacity

ITEM:	45920	45959	45869
MODEL:	SS-ES-0048-FS	SS-ES-0048-F	SS-ES-0048-FT



**Experience the power of hydraulic technology that makes sausage stuffing smoother and more efficient than ever.**

The hydraulic piston ensures consistent pressure, making it easy to control the sausage stuffing process and achieve professional results every time. It's built to withstand the demands in the kitchens. Upgrade your sausage-making game with this equipment.

**FEATURES:**

- 2 wheels and handle for easy transport
- Easily accessible speed control
- Pressure gauge
- Removable lid; adjustable lock nuts with handle
- Independent hydraulic oil reservoir
- Thermal protected motor
- Automatic knee lever lock until the piston reaches the lower position



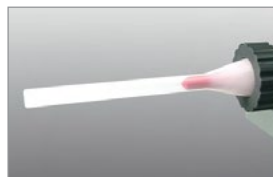
Ergonomic knee lever  
Reversible operating direction



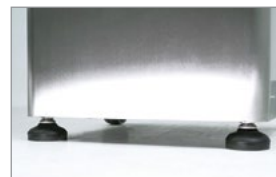
Removable lid,  
adjustable lid lock  
nuts with handles



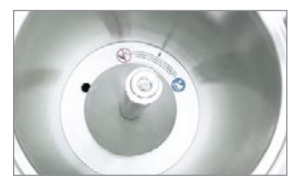
Speed control &  
pressure gauge



3 transparent nozzles,  
ø ext 14, 20 and 30 mm.  
Maximum hygiene,  
without edges



Adjustable  
anti-vibration feet



Fully stainless  
steel barrel bottom  
with water draining outlet.  
Simple cleaning.

Telephone: 1-800-465-0234

Fax: (905) 607-0234

Email: sales@omcan.com

Website: www.omcan.com



Authorized Dealer



FOR 45920

NEMA  
6-20P  
125VAC / 20 AMP



FOR 45959

NEMA  
6-15P  
250VAC / 15 AMP

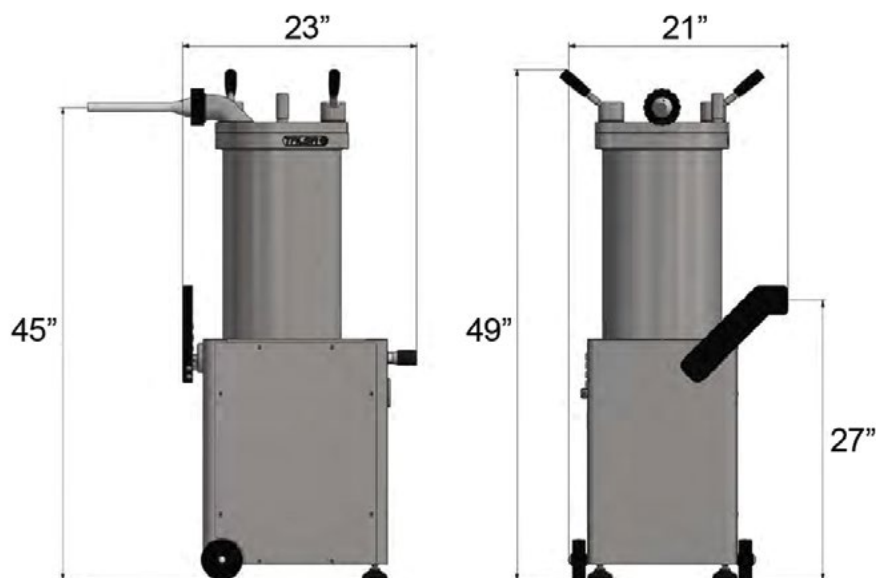


FOR 45869

NEMA  
L15-20P  
250VAC / 20 AMP



## TECHNICAL DRAWING



## TECHNICAL SPECIFICATION

Features	1,300W, 110V with 1Ph	1,300W, 220V with 1Ph	1,110W, 208V with 3Ph
Item	45920	45959	45869
Model	SS-ES-0048-FS	SS-ES-0048-F	SS-ES-0048-FT
Approx. Meat Capacity	48 lb. / 22 kg.	48 lb. / 22 kg.	48 lb. / 22 kg.
Barrel Capacity	25.2 L / 6.6 Gal	25.2 L / 6.6 Gal	25.2 L / 6.6 Gal
Operating Temperature	5°C - 40°C / 40°F - 100°F	5°C - 40°C / 40°F - 100°F	5°C - 40°C / 40°F - 100°F
Power	1.75 HP / 1300 W	1.75 HP / 1300 W	1.5 HP / 1100 W
Amps	18 A	8.8 A	5.6 A
Electrical	110V / 60Hz / 1Ph	220V / 60Hz / 1Ph	208V / 60Hz / 3Ph
Net Weight	310 lb. / 140 kg.		
Net Dimensions	23" x 21" x 49" / 584 x 533 x 1245 mm		
Gross Weight	350 lb. / 160 kg.		
Gross Dimensions	21" x 27" x 54" x 533 x 686 x 1372 mm		
Plug Type	NEMA 5-20P	NEMA 6-15P	NEMA L15-20P



## OTHER ACCESSORIES (SOLD SEPARATELY)

Item	Description	Compatible
69577	Black Stainless Steel Swivel Caster with Break	45920, 45959, 45869